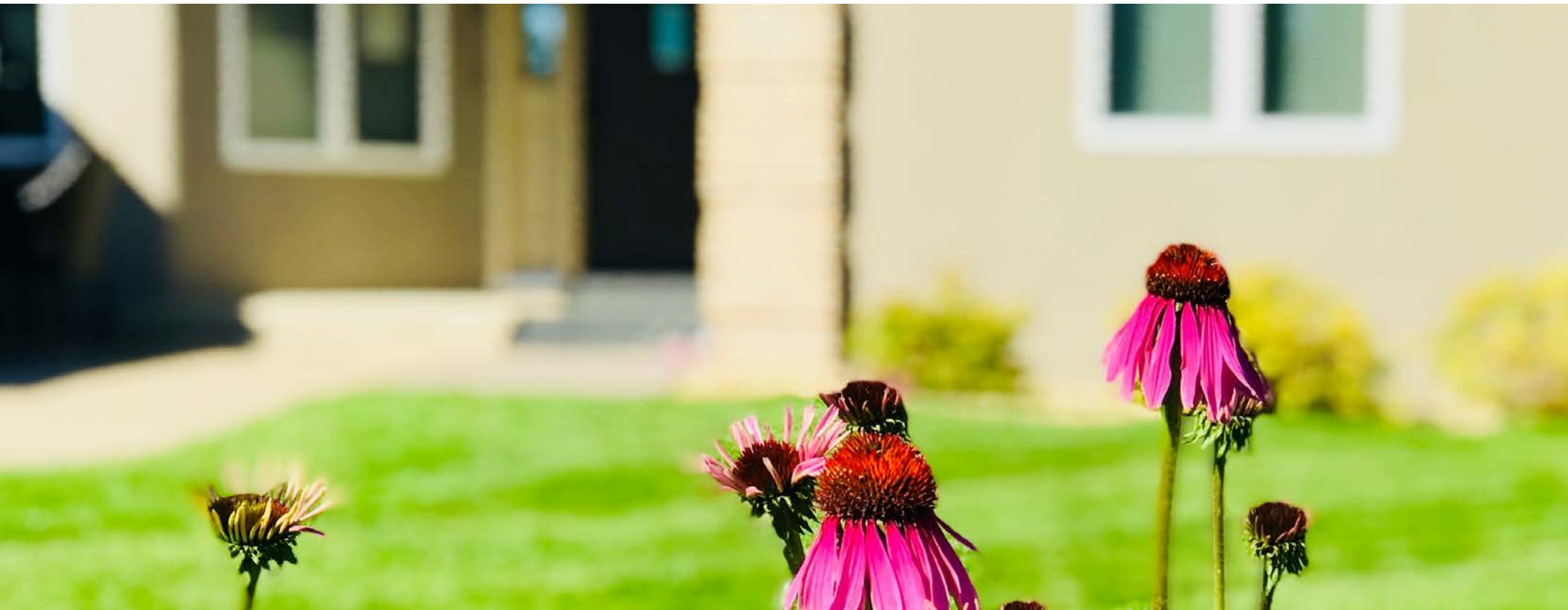




THE VERY BEST IN SENIOR RESIDENTIAL CARE



EDINA • BURNSVILLE • EAGAN • BLOOMINGTON • EDEN PRAIRIE

(612) 208-8888

[info@TheGenevaSuites.com](mailto:info@TheGenevaSuites.com)

[www.TheGenevaSuites.com](http://www.TheGenevaSuites.com)

# RETHINKING SENIOR LIVING

---

## 8 POINTS OF EXCELLENCE

1. Emphasis on care partnership
2. Quiet residential neighborhoods
3. Six private bedrooms
4. Guaranteed pricing for life
5. PT, strength & balance exercises
6. Delicious & healthy meals
7. Parkinson's & Alzheimer's Care
8. Care Partners on site and awake 24/7



Wide open views. Lighted Oak home in Bloomington.

# CORE VALUES

## WORDS WE LIVE BY

---

### **OUR VALUES MEAN EVERYTHING TO US**

We consider the safety of our residents a priority.

We improve our service continuously through education.

We are accountable for our actions and decisions.

We face changes and challenges with optimism.

We are a family of team players.

We love caring for people.



Sunny backyard and garden. The Ashwood House, Edina.



# ASHWOOD

## EDINA

### ABOUT ASHWOOD

- Parkwood Knolls neighborhood
- One-level living
- Heated bathroom floors
- Naturally lit, floor-to-ceiling windows
- Easy access to Hwy 100 and 169



Family style dining room



Garden side living room

### Notes:

---

---

---

---

---

---



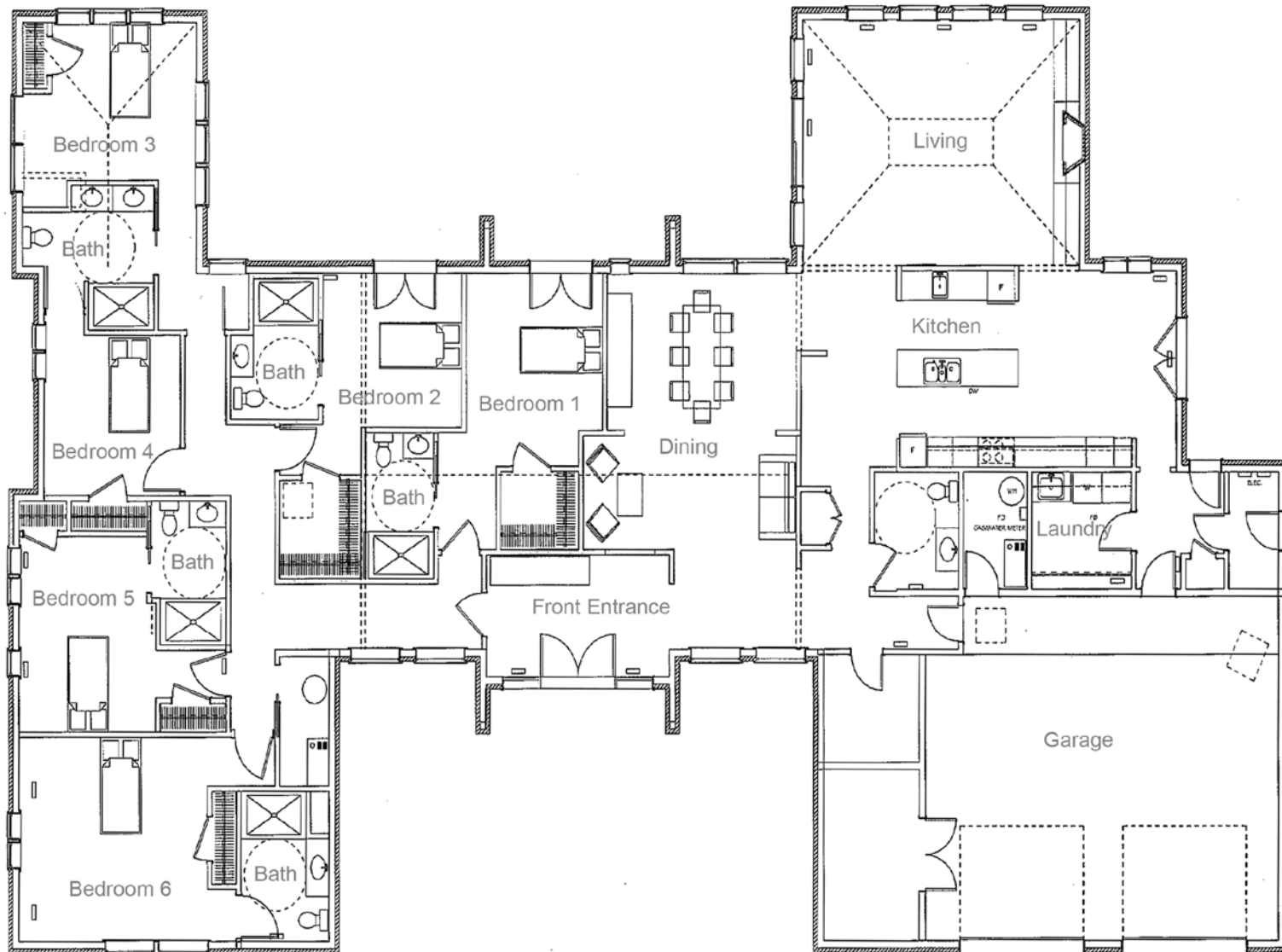
Gardens and pathways



Single level home

# ASHWOOD

## FLOOR PLAN





# BRAEBURN

## EDINA

### ABOUT BRAEBURN

- Central Edina neighborhood
- One-level living
- Sunny south facing patio
- 5 minutes from Hwy 169
- Wooded lot and cul-de-sac



Wide open spaces inside and out



Roomy bedrooms

### Notes:

---

---

---

---

---

---



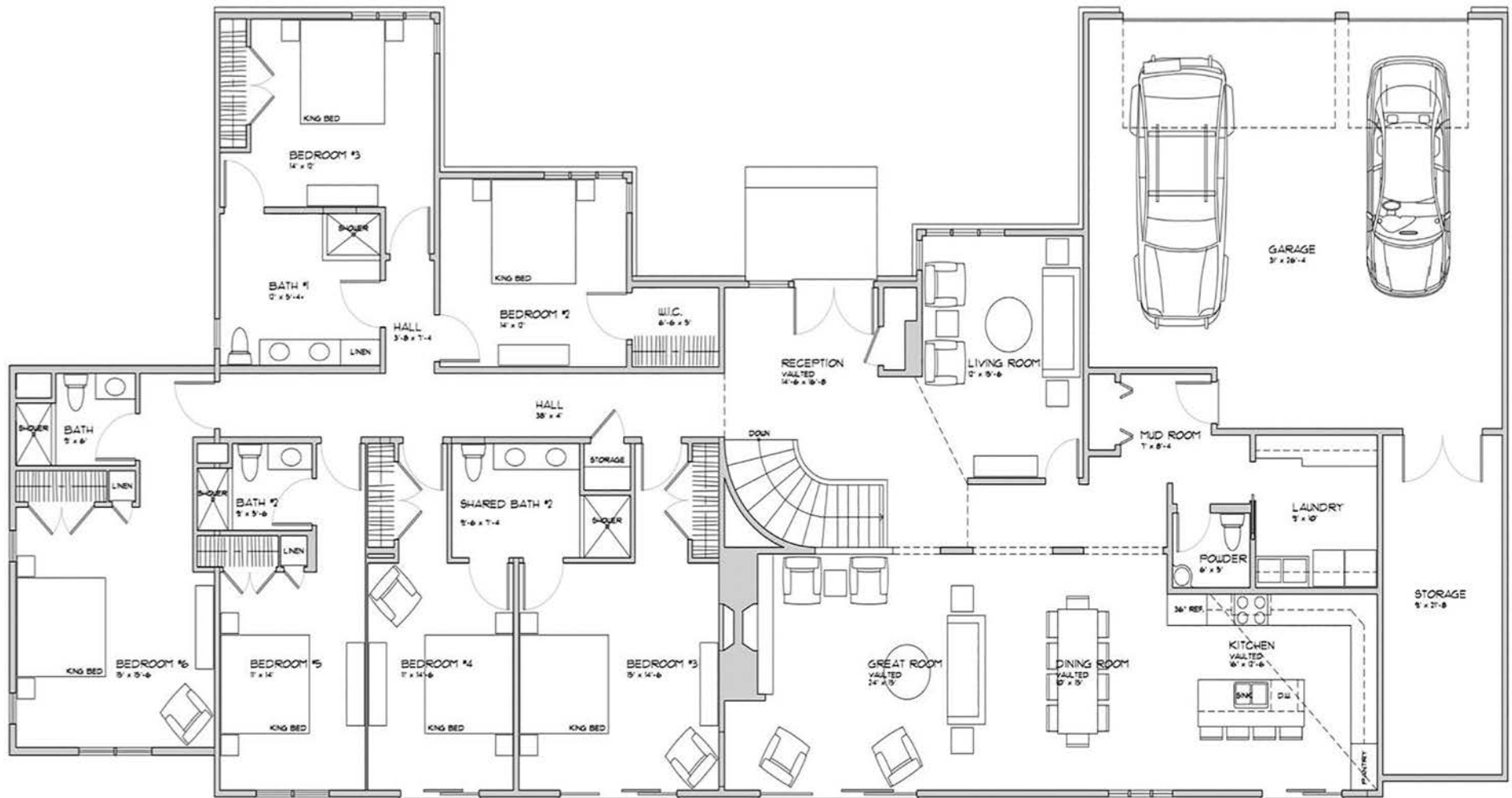
Quiet reading areas



Sunny, elevated deck

# BRAEBURN

## FLOOR PLAN





# EAGLE BIRCH

## BURNSVILLE

### ABOUT EAGLE BIRCH

- On Lake Alimagnet
- Floor-to-floor elevator
- Lakeside patio
- Echo Park nearby
- Nearby Fairview Ridges Hospital
- Floor-to-ceiling windows

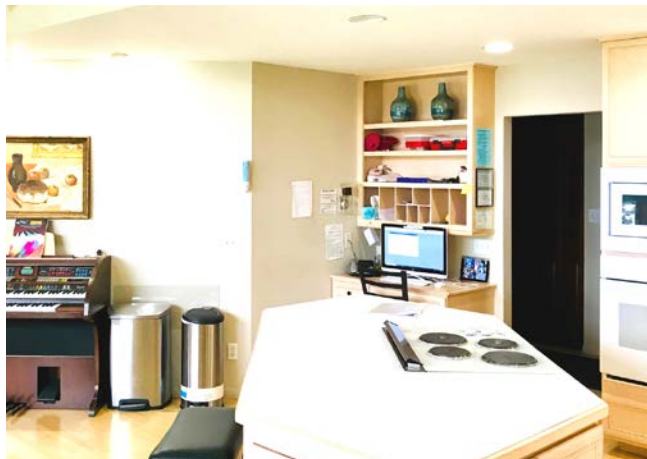


Cozy fireplace room



Lakeside lawn and patio

### Notes:



Roomy kitchen



Lakeside living room



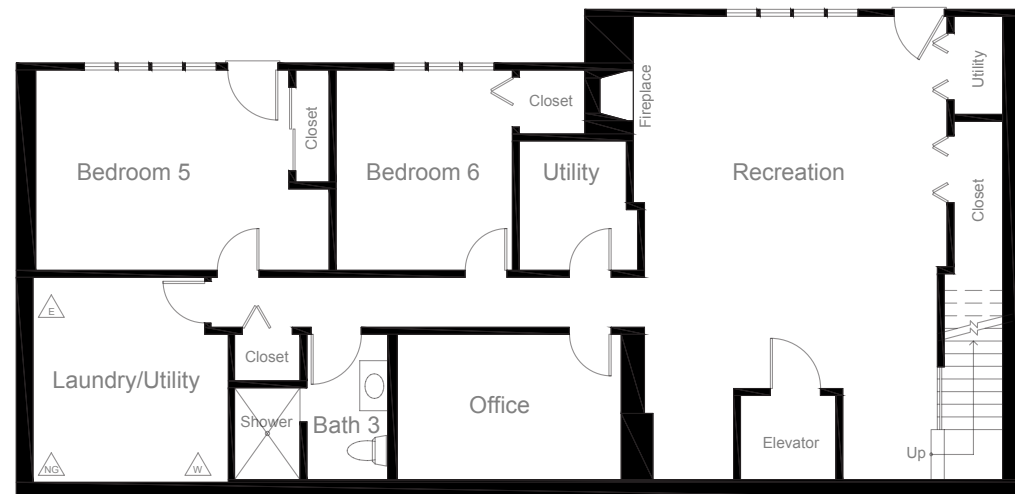
# EAGLE BIRCH

## FLOOR PLAN

### Main Level



### Lower Level



# JUNEBERRY

## EAGAN

### ABOUT JUNEBERRY

- Overlooking private pond
- One-level living
- Easy walk to Blackhawk Lake/Park
- 5 minutes from Hwy 35E
- Sunny yard and grounds



Open living/dining area



Single level living

### Notes:

---

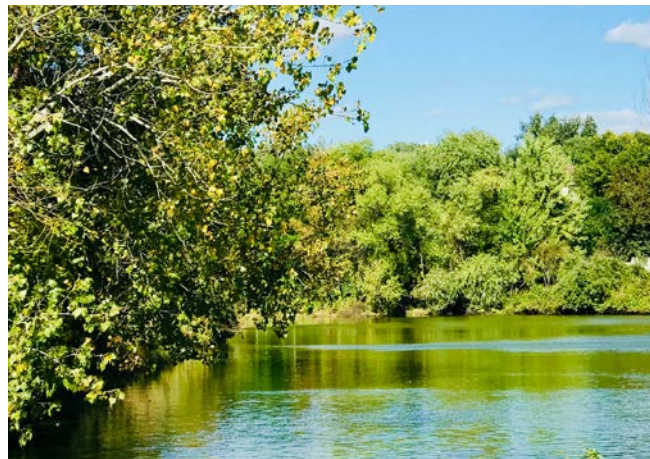
---

---

---

---

---



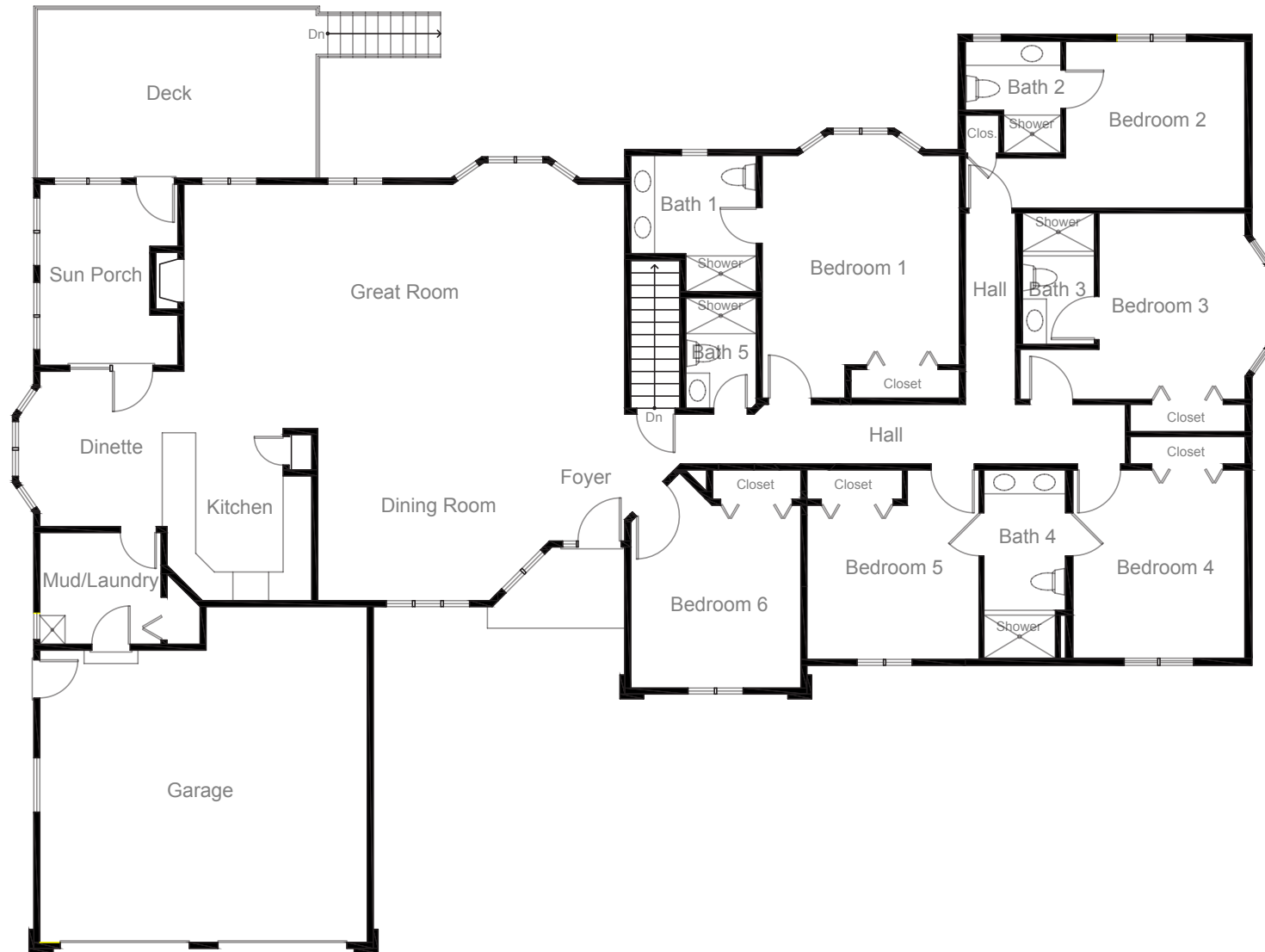
Private pond out back



Natural light dining room

# JUNEBERRY

## FLOOR PLAN





# LIGHTED OAK

## BLOOMINGTON

### ABOUT LIGHTED OAK

- Overlooking Minnesota River Valley
- Landmark "Lighted Oak" home
- Valley views in all 6 rooms
- Easy access from Hwy 35W
- Floor-to-floor elevator
- Six private bedrooms



Scenic, sunrise facing views



Large open gardens & patio

### Notes:



Elevated outdoor deck



Quiet reading room

# LIGHTED OAK

## FLOOR PLAN



Main Level



Lower Level

# SILVER MAPLE

## EDEN PRAIRIE

### ABOUT SILVER MAPLE

- Quaint residential neighborhood
- Easy access from Hwy 169
- Sunny, well lit common areas
- Private bedrooms
- Floor-to-floor elevator
- Spacious deck with wooded overlook



Sunny yard and grounds



Comfortable, spacious private bedrooms

### Notes:

---

---

---

---

---

---



Spacious, well lit layout



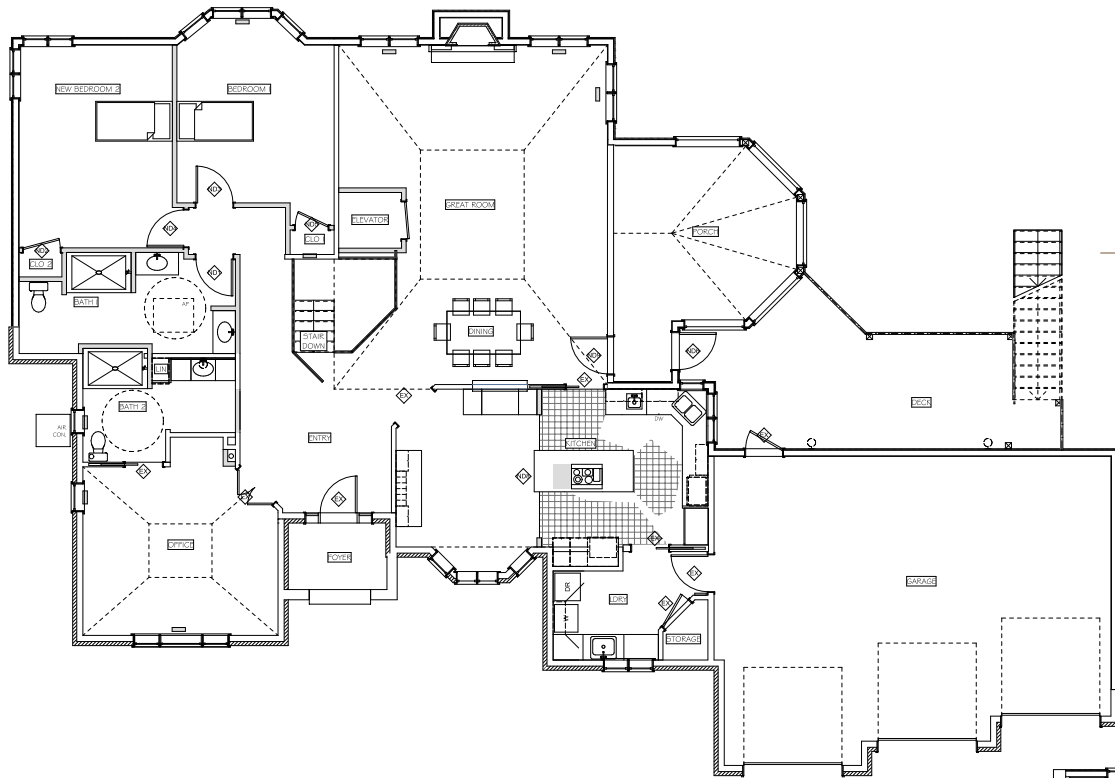
Large, open kitchen area



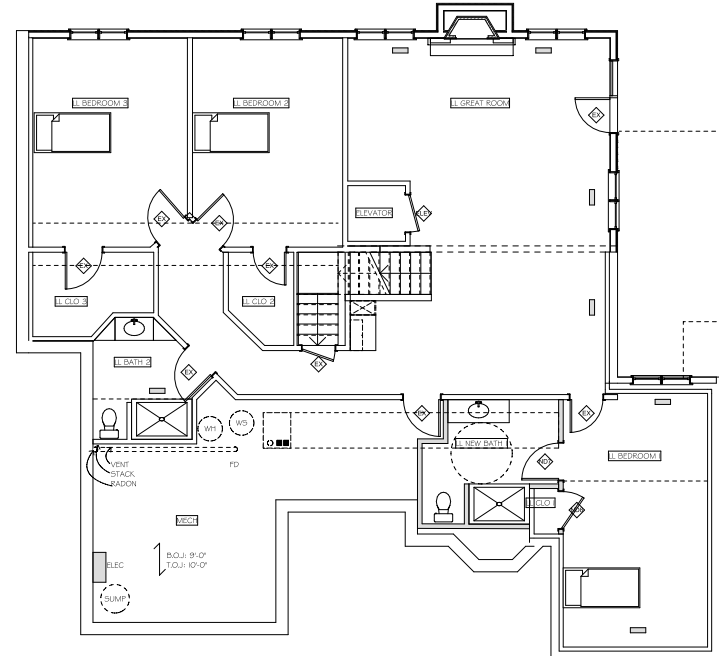
# SILVER MAPLE

## FLOOR PLAN

Main Level



Lower Level



# WILD PINE

## BURNSVILLE

### ABOUT WILD PINE

- Quiet wooded cul-de-sac
- Overlooking Judicial Park
- Floor-to-floor elevator
- Easy drive to Burnsville Mall
- Nearby Fairview Ridges Hospital
- Private bathrooms



Beautiful lawn and gardens



Open dining room

### Notes:

---

---

---

---

---

---



Roomy bedrooms



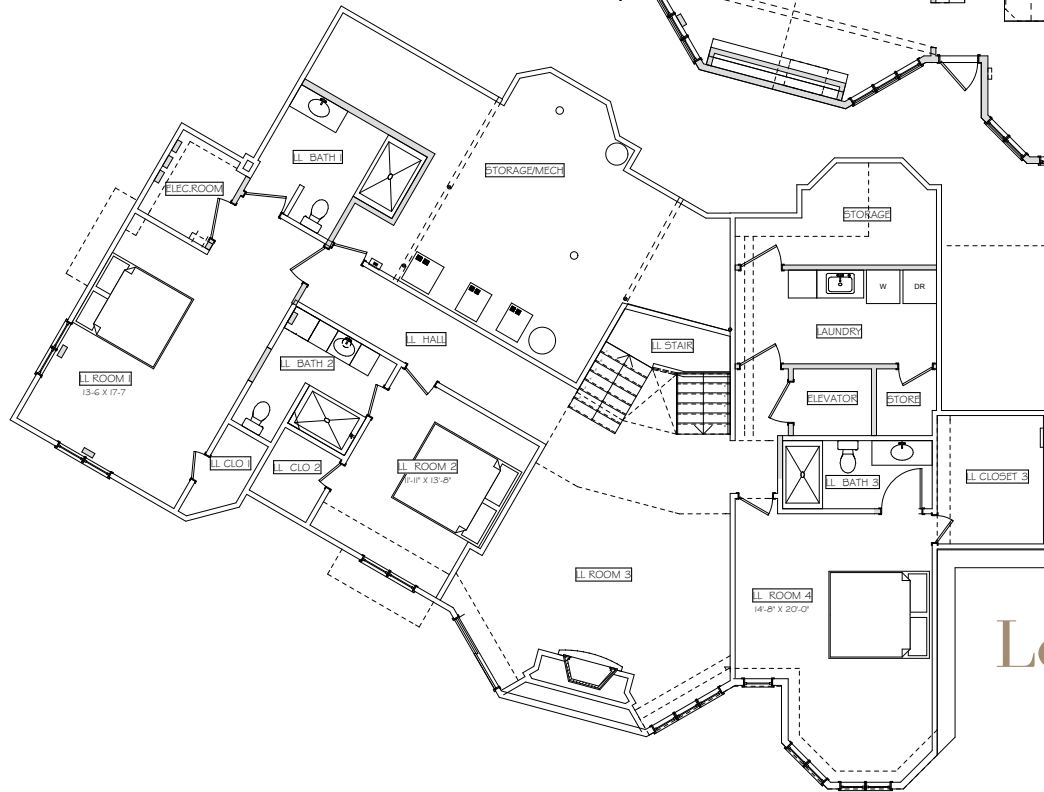
Comfortable living room

# WILD PINE

## FLOOR PLAN



Main Level



Lower Level



# CARE PARTNERSHIP

---

## **HERE, CARE IS A TWO WAY EFFORT.**

A Caregiver is the traditional term for people who provide care for those who cannot care wholly for themselves. A Care Partner is a somewhat newer term which recognizes that care is a two-way street. In a Care Partnership the efforts of a person trained in care PLUS cooperation of the individual accomplishes a higher level of care. It's an important distinction for us. We choose the Care Partner model at The Geneva Suites for a simple reason- happiness. We are acutely focused on the health and happiness of our residents. In all of our years in the healthcare industry, we've learned that health and happiness can only be achieved in a partnership. You cannot administer a smile like medication. You cannot cheer up a lonely person in a rush. You have to take your time. Taking our time with each and every resident is what we do best.



# SENIOR CARE

## DONE RIGHT

### BECAUSE WE SHOULD.

We created The Geneva Suites in order to provide seniors the "small care" they deserve. It's that simple. Over many years in the senior care industry we recognized a need for a different model of care. We saw an institutionalization of the elderly that left too many seniors lonely, poorly cared for and in homes that simply were not a "home." We decided there has to be a better way. That better way is The Geneva Suites.

*"There is no substitute for people. The industry has rushed toward efficiency and technology. We believe great care at its core is people centered first and foremost."*

*-Visionary/CEO Scott Hemenway*



Founders Marlena and Scott Hemenway.  
A family business run for families.

# WHAT TO ASK

## WHEN IT'S TIME TO MOVE

---

### PLAN AHEAD.

We've found that moving a parent to a new home is usually unexpected and often in a rush. Whether it's been on your mind for a while, or the doctor says it's time to move today, here are questions to ask any residence you're considering as a new home for mom and dad.

1. What is your staff-to-resident care ratio?

---

2. What happens in a health emergency for my parent?

---

3. What extra steps do you take if my parent gets lonely?

---

4. Are there doctors available?

---

5. Is physical therapy included?

---

6. What do you do if my parent doesn't like the food?

---



# READY?

WHEN TO CALL US

## WE TAKE PRIDE IN HELPING FAMILIES FIGURE OUT WHAT QUESTIONS TO ASK.

- We are available 24/7 to take your call.

We respond to your call within minutes, not hours.

- Feel free to email us at any time with questions  
or to schedule a visit.

### Call notes:

---

---

---

---

---

---

# THE GENEVA SUITES

## DIFFERENCE

---



PT, strength & balance exercises



Luxury residential homes



Guaranteed pricing for life

## Notes





*"Helen's face lit up the very first day she arrived at The Lighted Oak. Prior to arriving at Lighted Oak Helen's care was marginal at best, and she was extremely depressed. Our deepest gratitude to all of the extraordinary people in your organization."*

*- Jim and Vicki*